



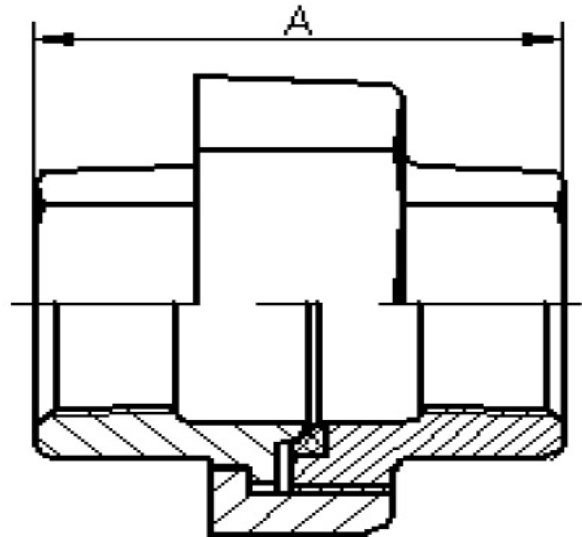
Spec Sheet: Brass Copper Union C x C (CU Series)

- ASTM B62-93-93 (C83600) 85-5-5-5
- ANSI/ASME B1.20.1
- ANSI/ASME B16.50
- ANSI B16.18, B16.30 Class 125
- ISO 9001:200
- Fed. Spec. WW-P460C MSS-SP-106
- ASTM B584-93B
- Unions WW-U-516B
- UL/FM Listed & Approved - EX15226
- NSF-372 Approved (Lead Free)



Dimensions (in)

Part Number	Nominal Size	A
CU-050	1/2"	1.73
CU-075	3/4"	1.95
CU-100	1"	2.07
CU-125	1-1/4"	2.26
CU-150	1-1/2"	2.42
CU-200	2"	2.76



WARNING: This product can expose you to chemicals including Lead, which are known to the State of California to cause cancer and birth defects or other reproductive harm. For more information go to:
www.P65Warnings.ca.gov
Wash hands after handling.